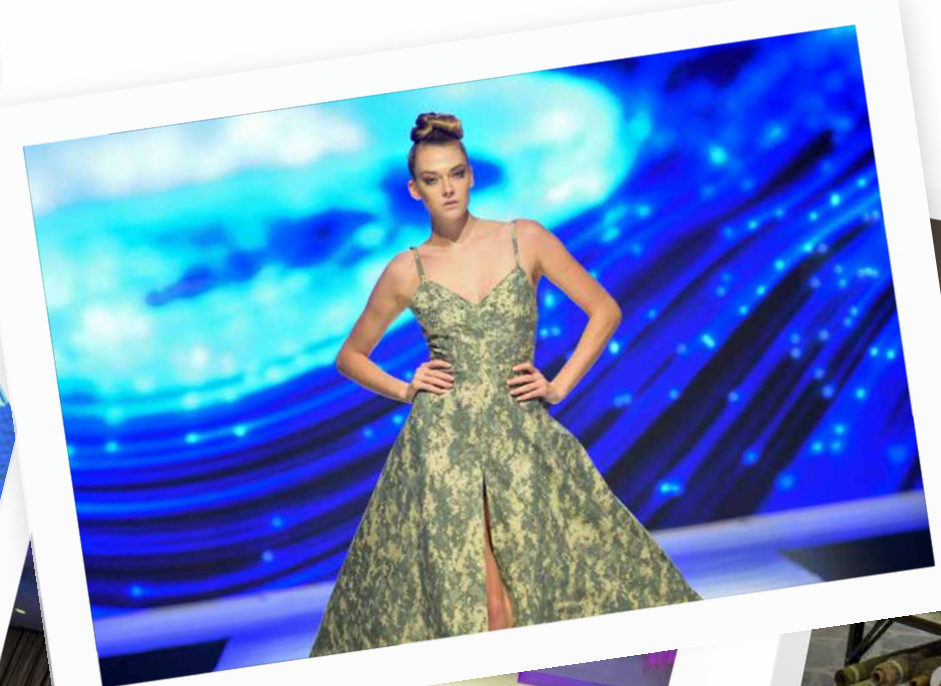


Goodwill 
South Florida 
2019 Annual Report



Craft Your Look
Celebrating 60 years



COMMUNITY NEEDS

There are 4.6 million people in Miami-Dade and Broward counties, 3.7 million of whom are working age. 12.2% of this population have developmental disabilities, physical disabilities, or mental disorders that challenge their ability to find and retain work. This is an extraordinary 457,000 people, 81% of whom are not working compared to only 34% of the non-disabled population. 23% of this population live below the poverty line compared to 14% of the non-disabled population, another startling difference from the non-disabled population.

MISSION

Goodwill South Florida, a nonprofit organization, whose mission is training, employment and job placement for people with disabilities and other barriers to work in Miami-Dade, Broward and Monroe.

HOW WE DO IT

Because of this great disparity, Goodwill is positioned as the most significant organization in South Florida focused on this community issue. We are the largest and best example of Social Enterprise, starting nonprofit businesses that help fund our human services mission while actually employing many of the people that we are focused on helping. We execute this mission by receiving donated goods, selling them in our stores, and running multiple nonprofit entrepreneurial businesses which fuel the organization and employ many people in need.



OUR NEEDS

While primarily self-funded, Goodwill South Florida still struggles with funding like any nonprofit. We are challenged by the ups and downs of business, a lack of support of our mission-based vocational training programs, and acquiring enough seed money to launch additional growth-focused businesses that allow us to vocationally train, place and employ more people.

DRIVEN TO MAKING A DIFFERENCE

We receive great help from donors of clothing and goods, shoppers in our stores and from our other business services. But it is not enough to fund our robust mission and community needs. We are looking for supporters who are excited about financially participating in this endeavor. Visit goodwillsouthflorida.org to see how you can help support Goodwill.

Chair and President Report

Dear Friends of Goodwill,

Founded in 1959, Goodwill South Florida is proud to have celebrated its 60th anniversary last year. We have been and continue to be committed to making a difference to the people of South Florida. We are excited to present you with this Annual Report as we take a look back on the year 2019 and the great impact we made on those we serve. As you flip through the pages, you'll see that Goodwill South Florida is truly a special place.

Our mission continues to be training, employment and job placement for people with disabilities and other barriers to work. The task is a challenge. We know that the overwhelming majority would love a chance to be like everyone else who has the opportunity to create a sense of self through their work.

For the last 60 years, we have been laser focused providing work opportunities for those we serve. These advancements have been consistently strong over the years, none greater than the last few. We are proud to tell you that at 3,100 people strong, we have become the 17th largest employer in South Florida, amongst all Non-profit and For-profit organizations. 1,200 of our folks have a disability, which makes this the largest group of working-disabled in the State of Florida, and one of the largest in Southeastern United States. Goodwill South Florida has become a model "Social Enterprise" organization, creating businesses that are designed from the ground up to employ people with disabilities, but can also create cash flow to fund our program efforts, including vocational training. We are most proud of the fact that 97% of our revenues are generated by these enterprises, and that 96% of our costs go to Program Expense, which is a US best practice.

Last year was filled with advancement in our Social Enterprises. Our retail business reached 36 stores in South Florida, and now employs 1,200 people. Our Apparel Manufacturing operation has become one of the largest uniform providers to the armed forces, and also employs 1,200. Our Custodial Services enterprise now cleans nearly 7 million square feet and employs 200 people, and our Commercial Laundry is nearing its 40 million pound capacity and employs nearly 250 people. We are also very excited to be in launch mode of the 3rd Party Logistics company to serve another set of needs for the Army. That operation will provide significant growth in 2020... which means... more opportunities for people with disabilities and other barriers to work.



Tomás Erban
Board Chair



David Landsberg
President & CEO

When people with disabilities come through Goodwill's doors they are looking for a chance, like the rest of us - eager to work, succeed, and lead fuller lives. We understand that disabilities don't define people. That is at the core of our philosophy. Our work is always about shining light on capabilities. As you walk through our halls, the joy of participation and sense of empowerment that show on the faces of those we serve, speaks for itself. We have learned over the years that a fundamental need of people is to be engaged in something productive. Having a job creates hope and opportunity for all of those we serve.

We know that in order to make a real impact, we need to maintain financial stability and continue to grow as an organization so that we can fund programs that help our participants reach their full potential. We encourage individuals, business owners and government leaders to double down on their commitments to Goodwill to help us grow our impact on the many more people that would love to experience the power of work.

Here's to many more years of Goodwill.

Program Impact

We are one of the most cost-effective nonprofits in the U.S. with 96% of our expenses going toward funding direct programs.

Every day, the men and women that we serve at Goodwill wake up with the opportunity to focus on their many capabilities, while dealing with their disabilities. Through our mission of employment, training, and job placement for people with disabilities and other barriers, Goodwill gives them hope, a sense of purpose and a life changing experience. Here are last year's results:

In 2019, Goodwill provided the following Units of Services:

Admissions	515
Distribution of information and referrals	4,132
Employed at Goodwill <i>(while receiving training & services)</i>	2,528
Provided placement services	671
Programs for developmentally disabled	166
Conducted vocational evaluation	98
Provided certified vocational training	154
Supported employment through VR and APD	122
Pre-employment training provided	76

Primary Disabilities:

Developmental Disabilities	662
Psychiatric, Emotional and Behavioral Disabilities	1691
Orthopedic/Mobility Impairments	352
Hearing, Speech and Visual Impairments	157
Other Disabling Medical Conditions	672
Disadvantaging Conditions	3,526
Total People Served	7,060



Participant Diversity

White	3%
Other	10%
Haitian	9%
African-American - Other Black	19%
Hispanic or Latino	59%



Satisfaction Surveys

During 2019 we had the following favorable results on our Satisfaction Surveys:

Participant Surveys	99%
Parent Surveys	100%
Referral Sources Surveys	100%

Inaugural Gala

Board member Allison Shipley & Family



Robert & Melly Sanchez



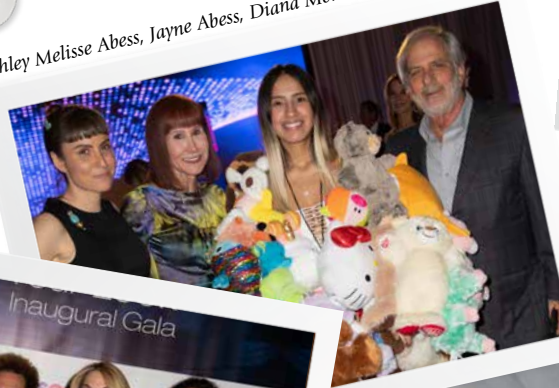
Former Miami Mayor Manny Diaz, David Landsberg, Gala Chair Rachel Sapoznik & Vice Chair Tony Argiz



NBC's Kelly Blanco & designer Rene Ruiz



Ashley Melisse Abess, Jayne Abess, Diana Montero & Leonard Abess



David Landsberg, Lourdes de la Mata Little, artist Romero Britto, Rachel Sapoznik & Lucas Vidal



Board member Rosary Plana, Brian Bilzin, board member Barbara Shrut, board member Michael Burnstine and Ana VeigaMilton

Rehabilitation Services

Workforce readiness is a key outcome that is at the core of Goodwill's mission. Job creation and maximizing personal independence for those we serve is central to all of our programs. Vocational Rehabilitation is the foundation of Goodwill's programs offering a continuum of services that helps the individuals to develop their optimal human potential and overcome their barriers to employment.

Our Services and Programs

When entering the program the majority of persons begin with a **vocational evaluation** which helps to identify the type of employment or training that a person is best suited for and to determine the person's interest areas.

The Work Activities Center / Adult Day Training provides work experience and social development to people with Developmental Disabilities. This program enhances work

skills and behaviors so that the participants can move upwardly through other programs available to them.

The Vocational Training Programs are taught by Miami-Dade County School instructors in the areas of Environmental Services, Sewing Automation, Retail/Customer Service and Adult Basic Education.

The Job Development and Placement Department works with individuals who are seeking employment. This program works to improve the person's employability skills and then match jobs in the community with the skill sets and preferences of those served.

The Work Services Program is designed to provide employment opportunities within Goodwill for those participants who continue to need follow along and support services for a longer period of time. This provides work experience and makes it easier for the individual to be placed in outside employment afterward.



Human Services

During 2019 our mission was fulfilled by serving 7,060 people with disabilities and other barriers to employment and placing 1,378 persons into employment opportunities both inside Goodwill and in positions in the community. Emphasis was placed on serving more persons in the diversity groups of Veterans, Homeless, Ex-Offenders and Refugees. 814 persons were served in this diversity grouping.

Achievers of the Year

Antwan Chinn

Mr. Antwan Chinn, 36, was born in Miami, and he and his twin sister were raised by his mother, grandmother and uncles. He currently lives in Brownsville with his mother and other siblings. Antwan completed high school with a special diploma; he also acquired a certificate in commercial arts technology.

Antwan was born with chronic renal failure. His right kidney did not function at birth, and he lost his left kidney in adulthood. He was also born with specific learning disabilities in reading and math. Antwan receives kidney dialysis three times per week.

Prior to being referred to Goodwill by the Division of Vocational Rehabilitation, Antwan had a varied work history. He worked as a security guard, a dock worker, a graphic designer, and a teacher's office assistant. However, because of his disability and the lack of appropriate workplace accommodations, Antwan was never successful in any of these jobs.

The Employment Specialist who was assigned to Antwan began working tirelessly to get Antwan prepared for a job. Antwan attended Pre-Employment classes at Goodwill, he was coached on interviewing skills and he attended many job fairs. Meanwhile the Employment Specialist was working to make a job match in the community. It was also necessary for the job to be with an employer who would make accommodations for Antwan. After many searches a position was located at Regions Security as a security guard. Antwan worked to get his security guard's license. His employer was willing to accommodate Antwan's work schedule so that he could still attend dialysis three times a week. Without that accommodation, Antwan could not have retained the job.

Antwan is happy in his job and has a good outlook on his future. He is an inspiration to all.



Courtesy of Sharon Socol Photos: Pedro Wazzan & Diana Espin



Antwan Chinn and Counselor Maria Trevino

The Division collaborates with the broader community including many state agencies, public education, United Way, Veterans' Organizations, Homeless Shelters, and other organizations to ensure that our participants have access to all needed services and that the services are coordinated logically.

The staff of the Human Services Division is dedicated and highly qualified; they are professionals that adhere to the standards of three nationally recognized accreditation organizations.



Felice Sabetai

Ms. Felice Sabetai, 44, was born in Fort Lauderdale. She graduated from Miami Sunset High School with a Special Diploma and lives with her father and mother.

Felice was born with mild intellectual disability and is also diagnosed with attention deficit hyperactivity disorder.

Several years after high school Felice started in Goodwill's Work Adjustment Program where she acquired the meaning, value and understanding of the world of work, and she also improved her communication with other participants. Upon completion of that program she was transferred to the manufacturing program as a bench worker where she currently remains. Felice has benefited from counseling, constant supervision and simple instructions to learn new tasks at her own pace. Throughout the years Felice has demonstrated dedication to her work with full compliance in the work place.

Felice constantly tries to do her best to stay focused on each assigned task. Felice's supervisors describe her as a cooperative and courteous person who has a pleasant attitude and has made progress in establishing good relationships with her co-workers and supervisors.

Felice has learned good work habits and continues to improve her stress and frustration tolerance as well as gaining more self-control when facing pressures at work. She benefits greatly from positive reinforcement, feedback and support to deal with unexpected situations or changes at work.

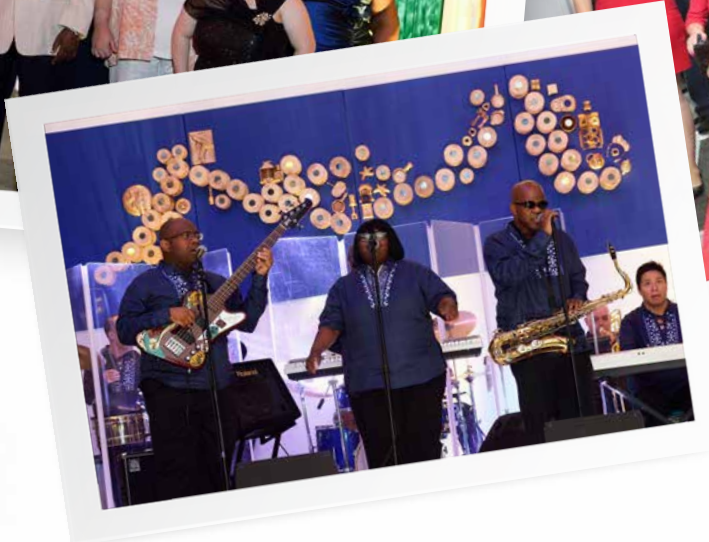
One of Felice's more recent remarkable achievements was her participation in the fashion show during the Goodwill Gala on November 19, 2019 where she was able to overcome her shyness and model with other participants in front of a large and impressive audience. We congratulate Felice on her long and enduring road to success.



Courtesy of Sharon Socol Photos: Pedro Wazzan & Diana Espin



Felice Sabetai and
Counselor Maria Paulina Hernandez



Goodwill Hope and Opportunity



For 60 years, it has been the people and the shining faces across the organization that make this place so special and unique. We embrace the Spirit of Goodwill. As work is done, social bonds are created, and there is a sense of a connection to purpose and a bigger family. We care about our participants' well-being far beyond the job.





Social Enterprise

Goodwill engages in a unique social enterprise model which funds services and employment for over 3,100 persons. Although most known for its Goodwill donation centers and retail stores, the organization's other entrepreneurial businesses include Apparel Manufacturing, Custodial Services, and Laundry Services which directly train and employ a large number of people while providing mission funding.

BUSINESS SERVICES



Stores and Donated Goods

Donate Stuff. Shop. Create Jobs. Your donations and support of our stores, donation centers, and online e-commerce (shopgoodwill.com), fund programs that assist people with disabilities and other barriers, basically, putting people previously unemployable to work.



Apparel Manufacturing

For over twenty five years, Goodwill has manufactured military apparel for the U.S. Department of Defense. With a workforce of over 1,200 people, today, we produce caps, combat coats, shirts, combat trousers, dress slacks, and U.S. Interment flags. This significant work creates opportunities for people with disabilities. Our customers include: Defense Logistics Agency, U.S. Department of Veterans Affairs, SourceAmerica, U.S. Army, the State of Florida, Peckham, and ReadyOne.



Custodial Services

Goodwill's custodial services offer grounds keeping, porter service, food attendant, cashiering, food preparation, and janitorial/custodial combined to employ over 200 people with significant disabilities. Goodwill's customers include the majority of federal, state and local government entities also including National Oceanic and Atmospheric Administration, U.S. Air Force, U.S. Coast Guard, U.S. Navy, U.S. Army, and the U.S. Department of Agriculture.



Laundry Services

The Goodwill Laundry Services operation was built to create more jobs in our community; especially, the Liberty City area. It is a state-of-the-art automated facility, energy-efficient and environmentally friendly. We currently process 38 million pounds of linen per year and employ 240 workers.



3rd Party Logistics Solutions

Goodwill South Florida is located near the major ports of Miami for shipping and provides support in warehousing and distribution operations, receiving, kitting, assembly and shipping goods, and logistics management solutions. Our 3rd Party Logistics Solutions are an efficient and cost-effective business partner to help get products into the hands of consumers.



Directors and Trustees

Goodwill is grateful to our volunteer directors, who are active and generous supporters of the mission. They, too, are driven to make a difference and experience something real. They ensure adherence to the highest standards of efficiency, quality, service, ethical conduct, public accountability and transparency.

Senior Leadership

Officers

Tomás P. Erban

Chair, Retired Executive

Barbara L. Shrut

Vice Chair & Chair - Marketing Committee, SLB Advisors

Julie Greiner

Secretary, Retired Executive

Rudy Kranys

Treasurer, Retired Executive

Peter L. Bermont

*Chair - Investment/Audit
The Bermont Advisory Group*

Michael Burnstine

*Chair - Business Services Committee,
Vice President Lockton Companies, LLC*

Jorge A. Fernandez Ceballos

Chair - Audit Committee, Retired Executive

Joseph Lacher

*Chair - Development/Compensation,
Retired Executive*

Charles M. Rosenberg

*Chair - Governance Committee,
Attorney, Carlton Fields Attorneys*

Edward Manno Shumsky

*Chair - Compensation Committee,
Retired Executive*

Irma Rebozo Solares

*Chair - Human Services Committee,
Attorney at Law, Carlton Fields Attorneys*

David Landsberg

*President & CEO,
Goodwill Industries of South Florida*

Jayne Harris Abess

*Chair Emeritus,
Partner, ThinkLAB Ventures*

Directors

Mark Burstein

*President and Chief Strategy Officer,
NGC Software*

Heather Gatley

*Vice President & Deputy General Counsel of
Global Labor & Employment, Ryder System*

Wifredo Gort

*Commissioner - District 1
City of Miami - City Hall*

Brian May

Partner, Floridian Partners

George L. Pita

*Executive Vice President & CFO,
MasTec, Inc.*

Rosary Plana Falero

Senior Private Banker, Wells Fargo

Alberto Santalo

*Internet Entrepreneur,
Founder & CEO, 8base, Inc.*

Allison P. Shipley

*Principal,
Pricewaterhouse Coopers, LLP*

Merrett R. Stierheim

Retired Executive

Victoria E. Villalba

*Founder & President,
Victoria & Associates Career Services*

Trustees

Sarah N. Artecona

*Associate Vice President,
Community Engagement University of Miami*

Rodney Barreto

Chairman, Floridian Partners

William Beames

Retired Executive

Robert Bromberg

Retired Executive

Laurence Deets

*Chief Financial Officer,
Butler, Buckley, Deets*

James M. Fraser

*Vice President and General Manager,
Turner Construction Company*

Gen. Douglas M. Fraser

*International Defense & Security Consultant,
Doug Fraser, LLC.*

Dr. Wilbert "Tee" Holloway

Retired Executive

Sherrill W. Hudson

Retired Executive

Joe Oglesby

Retired Executive

Debra D. Owens

*Intergovernmental Affairs State Manager,
Dante Fascell Port of Miami-Dade*

Leslie Pantin, Jr.

President, Beber Silverstein/Pantin Group

Jorge R. Villacampa

*President, Community Bank
Wells Fargo Company*



David Landsberg
President & CEO



Bridget Pallango
*Sr. Vice President,
Human Services*



Mauricio Hernandez
Chief Operating Officer



Beatriz Anazco
*Vice President,
Financial Management*



Lourdes de la Mata-Little
*Vice President,
Marketing & Development*



Mark Marchioli
*Vice President,
Business Development*



Diana Valencia
*Vice President,
Apparel/Flag Manufacturing*



Brett Bartschi
*Vice President,
Donated Goods*



Harry Ramsarran
*Vice President,
Service Contracts*

Thank You

to our Supporters

We extend heartfelt thanks to our faithful supporters who generously donate year after year, and to our board of directors for being the catalyst of our fundraising efforts. The following individuals, corporations and foundations donated between January 1, 2019 and December 31, 2019. Their generosity enables us to help people with disabilities and other barriers find and maintain employment.



Founder's Circle

\$300,000+

Badia Spices, Inc.

Pillar Circle

\$200,000-299,999

Suzanne and Joseph Lacher
Ryder Charitable Foundation

Diamond Circle

\$50,000-99,999

The Abess Family
The Irma and Norman Braman
Philanthropic Fund
Pricewaterhouse Coopers, LLP
Sapoznik Insurance

Platinum Circle

\$25,000-49,999

Allison Shipley Family Fund
Bacardi USA
Colonial Life Insurance
Morrison Brown Argiz & Farra, LLC
Turner Construction

Gold Circle

\$15,000-24,999

Bilzin Sumberg Baena Price
& Axelrod, LLP
Sherrill W. Hudson
MetLife Group Benefits
Publix Super Markets, Inc.
Ryder System, Inc.
The SunTrust Foundation

Silver Circle: \$10,000-14,999

Aetna
Allen Norton & Blue PA
The Ayco Charitable Foundation
Kerrin and Peter Bermont
The Cobb Family Foundation
The Fine and Greenwald Foundation

Julie Greiner Weiser and
Michael Weiser
The José Milton Foundation
Susan Kronick and Edward
Manno Shumsky
Lockton Cares Foundation
MBF Family Foundation

Navajo Air, LLC
Northern Trust Bank Company
Irma Reboso Solares Esq
The Related Group
Gayle and Charles Rosenberg
Barbara Shrut and Steven
Gretenstein

Robin Smith and Manny A. Diaz
Southern Glazer's Wine & Spirits
Roxana Starkman
TECO Energy, Inc.
University Of Miami
Williamson Automotive Group

Bronze Circle: \$6,500-9,999

American Standard Textile
Eduardo Atienza
Baptist Health South Florida
Bank United
Brittany Global Technologies

City National Bank
Constangy Brooks Smith
& Prophete, LLC
Converge
Remedios and Fausto
Diaz-Oliver

Evoga Events
Production
FECI Company, LLC
Greater Miami
Convention &
Visitors Bureau

Idealease of Miami
John S. & James L.
Knight Foundation
Kaufman Rossin & Co
MasTec
MMG Equity

Ocean Bank
Reed Smith, LLP
Templeton Family Foundation
TenCate Fabrics
United Healthcare Services

Love: \$5,000-6,499

BBVA
Nancy and William Beames
Marsha and Brian Bilzin
Carlton Fields
City of Miami

Clear Channel Worldwide
DC Holdings
Sandra and Tomás Erban
Florida Power & Light
Edward S. Goodman
Ideal Fastners

Rudy Kranys
Anoly and David
Landsberg
Marsh Industries
Andrea and Brian May
N&K Enterprises

Pacific National Bank
Pine Belt
Processing, Inc.
George and Dalila Pita
Saint Louis
Catholic Church

TD Bank
Victoria E. Villalba
Wells Fargo
Young Presidents Organization
New England

Dream: \$2,500-4,999

The Chicago Community
Foundation
Cigna
DACRA

Linda DeMartino and
Gonzalo de Quesada
Faegre Baker Daniels
Foundation

Henderson Sewing
Machine
Iberia Bank
iHeart Media

Miami Design District
Associates
Susan Potter Norton
Judy Cannon and Merrett
Stierheim

Style The Runway
Tropical Trailer
WM NC Philanthropic East

Friend: \$1,800-2,499

Eileen Ball Mehta
Kara and Michael Burnstine
Rosary and Luis Falero

Paula and Michael Fay
Galleria Farms
Deborah and Larry Hoffman
Bridget Pallango

Sharon and Howard
Socol
Barbara and Richard
Souviron

Margaret and Roger Starnier
William P. Stroud
Tate Capital Real Estate
Solutions, LLC

Irina Vilarino
The Walk Collective
Helena and Scott Weiser

Spirit: \$1,000-1,799

All Construction & Plumbing, Inc.
Beatriz Anazco
Anonymous
B&B Insurance Solutions, Inc.
Ben Baldwin
Diane Barrett
Brett Bartschi and Alpha Balde
Manuel Becerra
Nathan Brand

Ruth Brophy
Melisse and Mark Burstein
Elena Carpenter Smith
Richard P. Donovan
Mauricio Hernandez
F. Mitchell Howell
The Hull Family Foundation
Infusion Consulting
The Jill and Neil
Berman Philanthropic Fund

Kohn Commercial
Real Estate, Inc.
Natasha and Jack
Lowell
Nancy Mandell
Jorge Milian
Milliken & Company
Kimrey D. Newlin
NEXZUM
Nomad Creative

Alfred J Novak
Carolina Pina
Myra and Robert Redman
Tony Rodriguez
Patricia Rosello
Damon Rutland
Eris Sandler
Becky and Albert Santalo
Martin E. Segal
Patricia Seitz

Maureen Shea
Virginia Shomar
Ronald A. Shuffield
State Street Realty
Robyn Tauber
Diana R. Valencia
Yablick Charities, Inc.

Goodwill Donation: \$500-999

David Armstrong
Paul Berkowitz
Steven J. Brodie
Burlington Fabrics
Dr. Alicia Carrazana
Loretta Ciraldo

Lourdes De La Mata-Little
Employees of Goodwill
Industries of South Florida
Amy Federman
Jorge A. Fernandez Ceballos
Florida Blue: Health
Insurance for Florida
FLM Gina Milio Trust

Nancy and Robert
Frehling
Holland & Knight LLP -
West Palm Beach Office
Claudia Kotchka
Leon Korol, Inc.
Jackie Martinez
Dennis Olle

Patricia Pardinias
Soledad Picon
Carlos Ramos
Regent Products
The Scherr Family
Sherri Schyphers Hungate
Scopelitis Garvin Light
Hanson & Feary PC

Dawn and Brian Sepe
Cory Shade
Donna E. Shalala
Julie Waas
Matthew Weiss
Maria Wright
Anthony Zannini

Goodwill Giving Circles

We need you to create even more impact!

Your impression of Goodwill South Florida is important. It takes more than our Goodwill to keep up with this special and unique community. We need your goodwill to make a difference and to help us continue to focus on abilities, not disabilities and to provide a feeling of accomplishment for those we serve.

Today, we invite you to join our Goodwill Giving Circle – a group of special people who choose to give people with disabilities and other barriers hope, opportunity and a real chance of belonging to a bigger community.

We offer many programs. Which of these interest you the most?

- **Job Training?** This program is taught by Miami-Dade County School instructors in a variety of areas including Adult Basic Education.
- **Adult Day Training?** This program enhances work skills and behaviors so that participants can move upwardly to other programs available to them.
- **Job Development & Placement?** This program works to improve the person's employability skills and match them with community jobs. Would you consider hiring one of our Goodwill graduates for your business?
- **Work Services Programs?** This program provides opportunities within Goodwill for those needing services for a longer period of time providing work experiences for outside employment.

Our Goodwill Giving Circle is a group of people who are driven to making a real impact to help the 82% of people with disabilities in Miami and Broward who are of working age – and unemployed. We invite you to join our Circle with a \$20 monthly gift for 2020.



Yes! I will support the Goodwill Advancement Campaign to help someone find a job.

Ways to make your impact:

- Make a donation to Goodwill South Florida using the self-addressed donation envelope provided in this report.
- Make your online donation by visiting goodwillsouthflorida.org or by scanning the code below with your cell phone to go to Goodwill's donation page.
- Join the Goodwill Gift Societies by filling out a pledge card today and setting up yearly payments.

For stock, IRA distributions, endowment, corporate sponsorships, in-kind gifts, naming opportunities, memorial and tribute gifts, planned giving or more information please contact:

Vanessa Sanchez (305) 326-4173
or vsanchez@goodwillmiami.org

Please consider joining Goodwill's Gift Societies:

- Spirit** (\$1,000-1,799)
- Friend** (\$1,800-2,499)
- Dream** (\$2,500-4,999)
- Love** (\$5,000-6,499)
- Bronze Circle** (\$6,500-9,999)
- Silver Circle** (\$10,000-14,999)
- Gold Circle** (\$15,000-24,999)
- Platinum Circle** (\$25,000-49,999)
- Diamond Circle** (\$50,000-99,999)
- Pillar Circle** (\$200,000-299,999)
- Founder's Circle** (\$300,000+)



Scan code to donate online:



Goodwill Financials

STATEMENT OF ACTIVITIES

For the Year Ended December 31, 2019

REVENUES AND SUPPORT

Donated good sales	\$ 66,166,044
Apparel manufacturing	65,434,347
Laundry services	14,846,321
Custodial contracts	9,497,490
Business services	60,036
Mission services	2,608,468
Contributions	1,576,012
United Way allocation	367,398
Miscellaneous income	86,523
Total Revenues & Support	<i>\$160,642,639</i>

EXPENSES

Donated goods operations	\$ 57,460,124
Apparel manufacturing	66,082,996
Laundry services	14,922,301
Custodial contracts	8,906,499
Business services	582,401
Mission services	5,586,365
Management and general	5,425,596
Fundraising	609,485
Total Program Services & Expenses	<i>\$159,575,767</i>

Increase in net assets without donor restrictions	1,066,872
Increase in net assets with donor restrictions	275,325
Increase in Net Assets	<i>\$1,342,197</i>

STATEMENT OF FINANCIAL POSITION

December 31, 2019

ASSETS

Cash and cash equivalents	\$ 6,872,956
Accounts and other receivables, net	11,048,594
Inventories	8,722,530
Prepaid expenses and other assets	4,449,764
Land, building and equipment, net	37,773,221
Total Assets	<i>\$68,867,065</i>

LIABILITIES AND NET ASSETS

Accounts payable	\$ 5,672,734
Accrued expenses and other liabilities	10,297,538
Mortgage notes, notes payable and lines of credit	14,431,093
Obligations under capital leases	1,036,603
Total Liabilities	<i>\$31,437,968</i>

NET ASSETS

Without donor restrictions	37,068,848
With donor restrictions	360,249
Total Liabilities & Net Assets	<i>\$68,867,065</i>



Goodwill Accreditations

Demonstrating our commitment to the highest standards of quality, public accountability and transparency.

CARF – The Commission on Accreditation of Rehabilitation Facilities
Accredits Vocational Rehabilitation Programs.

QIARANT – Agency for Healthcare Administration
Accredits Developmental Disabilities Services.

COE – Council on Occupational Education Committee
Accredits Vocational Adult and Basic Education Programs.

ISO 9001:2015
Registered and certified by TUV NORD in the areas of design and manufacture of textile goods including military uniforms, flags and accessories.

HLAC (Healthcare Laundry Accreditation Council)
This is a nonprofit organization that inspects and accredits laundries that process reusable textiles for hospitals, nursing homes and other healthcare facilities. Our accreditation substantiates, that we have been independently inspected and adhere to professionally recognized infection control procedures and policies.

CIMS Certified (Cleaning Industry Management Standards)
This certification applies to Management, Operations, Performance systems and processes that demonstrate we are structured to deliver consistent quality services to meet customer’s needs and expectations. It sets forth processes, procedures and supporting documentation proven to be characteristic of a customer driven organization.

Sarbanes-Oxley Act
Goodwill is in compliance with the Sarbanes-Oxley Act, including an independent Board of Directors’ Audit Committee and Compensation Committee in compliance with IRS Regulations.



Goodwill Industries of South Florida, Inc. is an independent and autonomous nonprofit organization governed by a Board of Directors from Miami-Dade, Broward and Monroe counties. Goodwill Industries of South Florida, Inc. is a member organization of Goodwill Industries International, Inc. in Washington D.C.

Annual Report concept, design and layout produced in-house at Goodwill South Florida.



Goodwill loves Green

Goodwill knows the power donations can have on people and the planet. For over 100 years, Goodwill has been a pioneer of the “reduce, reuse, repurpose” practice. Your donated goods are not only a great contribution to our mission, but they are also creating a healthier environment. Together we can have a powerful impact on our world.

Give It to Goodwill

Keep decluttering, organizing and staying green and “Give it to Goodwill”. Last year, we kept 31 million pounds of resold goods out of our landfills and used the proceeds to fund programs for people with disabilities and other barriers.

AbilityOne **Creating Job Opportunities for People With Significant Disabilities**
PROGRAM ★

Known as the AbilityOne Program, the Javits-Wagner-O’Day Act was federally enacted to provide diverse employment opportunities for people who are blind or have other significant disabilities on product and service contracts.

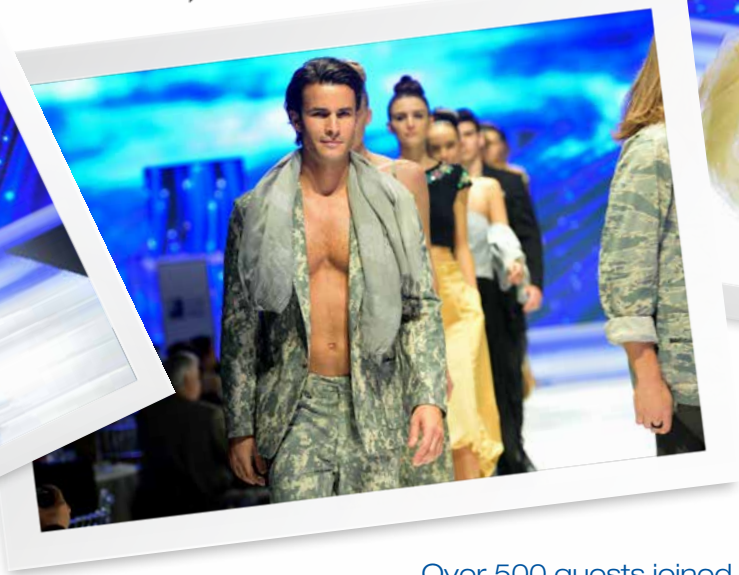
Today, our Goodwill affords AbilityOne federal customers a wide array of quality services and products, while providing jobs for people with significant disabilities, many who lived below the poverty line and were previously unemployed.

Goodwill salutes the AbilityOne Commission, SourceAmerica, and our Federal customers for excellent jobs in Miami-Dade, Broward and Monroe counties that truly employ people with significant disabilities.



Save the Date
November 14, 2020

Craft
Your Look
second annual gala



Over 500 guests joined in to celebrate Goodwill's 60th anniversary of serving South Florida. To see video and more event photos, visit goodwillsouthflorida.org

For more information please contact Adele Lorenzo at (305) 326-4182

Goodwill 
South Florida 

2121 N.W. 21 Street
Miami, Florida 33142
(305) 325-9114

2104 W. Commercial Blvd.
Ft. Lauderdale, FL 33309
(954) 486-1600

goodwillsouthflorida.org



@GoodwillSFL

